



National Science Foundation
WHERE DISCOVERIES BEGIN

National Science Foundation Research Activities Related to Autism

Mark Leddy, PhD, Program Director
Directorate for Education and Human Resources

Interagency Autism Coordinating Committee
January 14, 2014
National Institutes of Health



NSF envisions a nation that capitalizes on new concepts in science and engineering and provides global leadership in advancing research and education



NSF Act of 1950

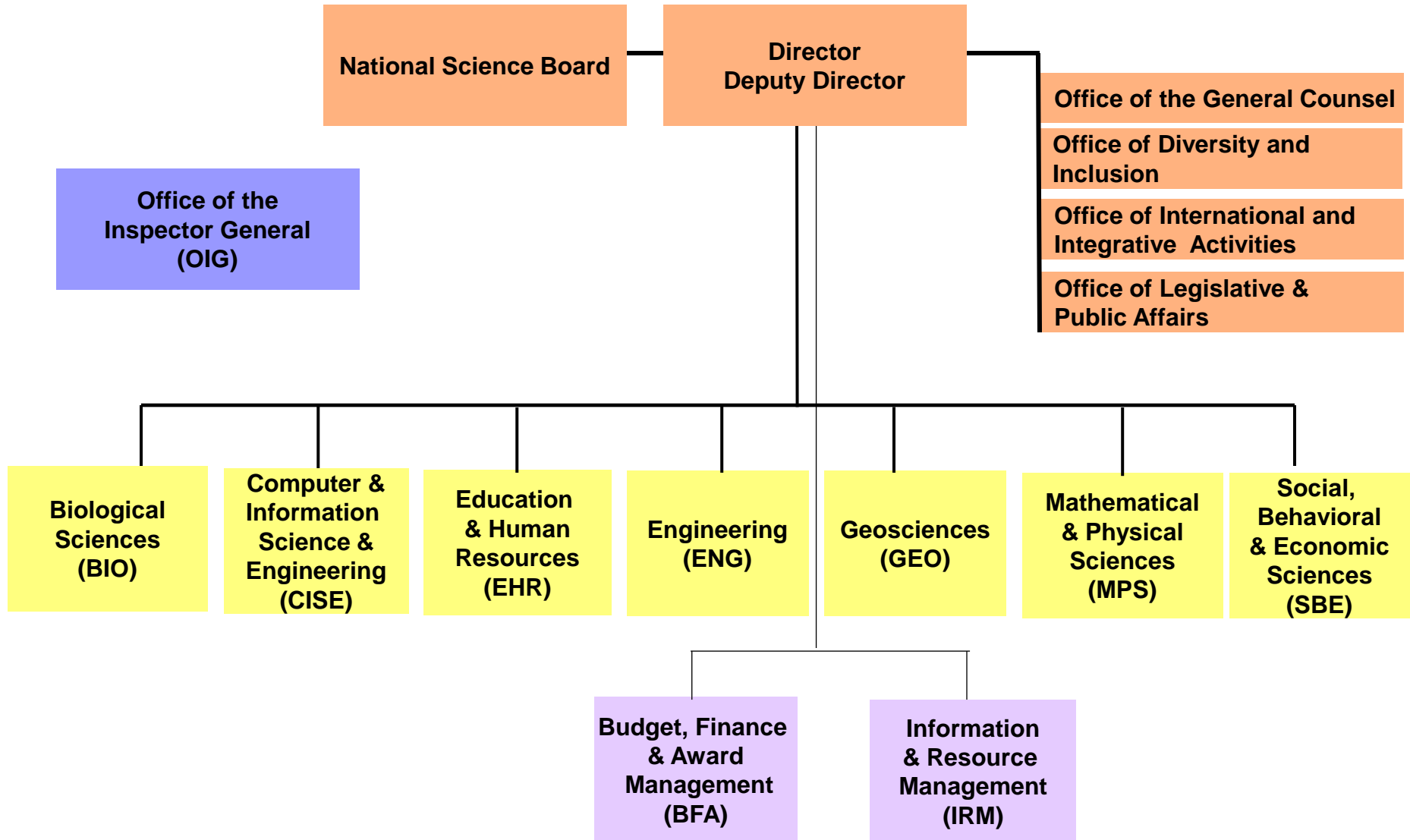
"to promote the progress of science;
to advance the national health,
prosperity, and welfare; to secure the
national defense..."





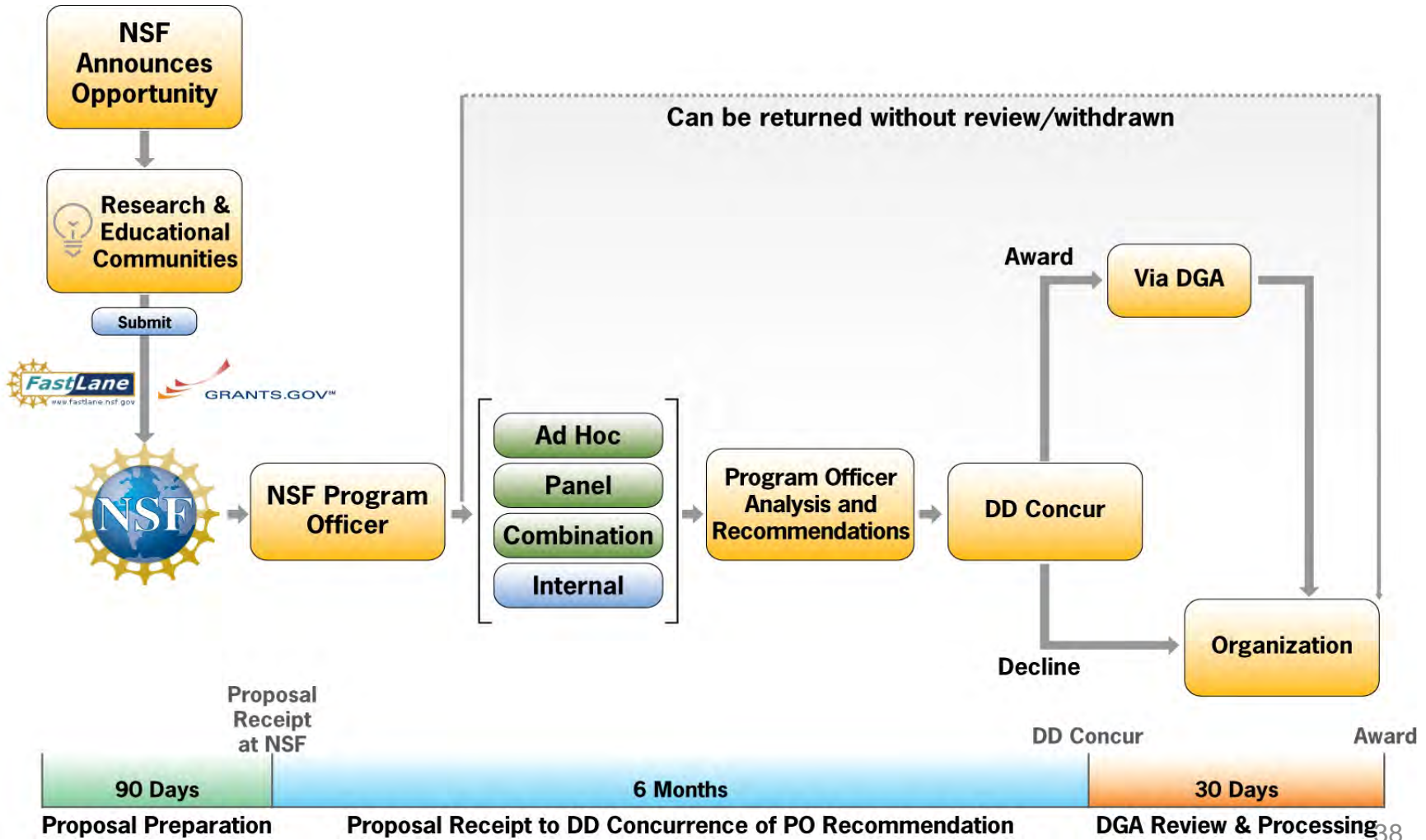
NSF Overview

- \$7 billion annual budget (94% funding programs)
- Fund basic research across all S&E disciplines and research in STEM education
- Discipline-based structure
- Cross-disciplinary opportunities
- Use grant mechanism and merit review process
- Expert reviewers and program officers
- Grant ~10,000-11,000 awards per year
- 20% of federally supported fundamental research at US institutions of higher education





NSF Proposal & Award Process Timeline





NSF PROPOSAL STATISTICS (FY 2013)

- **49,014 proposal actions**
- **~250,000 reviews**
- **~50,000 reviewers**
- **10,844 awards**
- **22.0% funding rate**



NSF Awardees

- U.S. Universities and Colleges
- U.S. Nonprofit, Nonacademic Organizations
- U.S. For-Profit Organizations
- State/Local Educational Organizations
- Unaffiliated U.S. Scientists, Engineers, Educators, & Citizens
- NSF Rarely Supports Foreign Organizations or Other Federal Agencies



National Science Foundation Research Activities Related to Autism

- NSF does not have autism research programs or initiatives
- NSF is not a member agency of IACC
- NSF funds an extremely limited number of awards where autism is a component of the research



- Collaborative Research: Computational Behavioral Science: Modeling, Analysis, and Visualization of Social and Communicative Behavior
- James M. Rehg, Georgia Institute of Technology (with Boston University, Carnegie-Mellon University, MIT, University of Illinois, USC)
- Develop novel computational methods for measuring and analyzing the behavior of children and adults during face-to-face social interactions
- Computer and Information Science and Engineering: 1029579, 1029430, 1029549, 1029585, 1029035, 1029373



- CAREER: Typical and atypical development of brain regions for Theory of Mind
- Rebecca Saxe, Massachusetts Institute of Technology
- Compare social cognitive task performance and neural responses in typically developing children, children diagnosed with Autism, and children who experienced delayed exposure to language (e.g., deaf children of non-signing parents)
- Social, Behavioral & Economic Sciences: 0955818



- Predictors of Success in Postsecondary STEM Education and Employment for Students with Autism
- Jose Blackorby, Xin Wei, Jennifer Yu at SRI International; Paul Shattuck, Drexel University
- Study an evidence base of factors associated with the postsecondary education and initial employment experiences of young adults with autism in STEM fields.
- Education & Human Resources: 1130088



United States Government Accountability Office
Report to Congressional Requesters

November 2013

FEDERAL AUTISM ACTIVITIES

Better Data and More
Coordination Needed
to Help Avoid the
Potential for
Unnecessary
Duplication

GAO-14-16

- GAO identified NSF funded 29 research projects related to autism in 2008-2012
- NSF funded ~55,000 projects 2008-2012
- NSF provides award information for the IACC's portfolio analysis system